

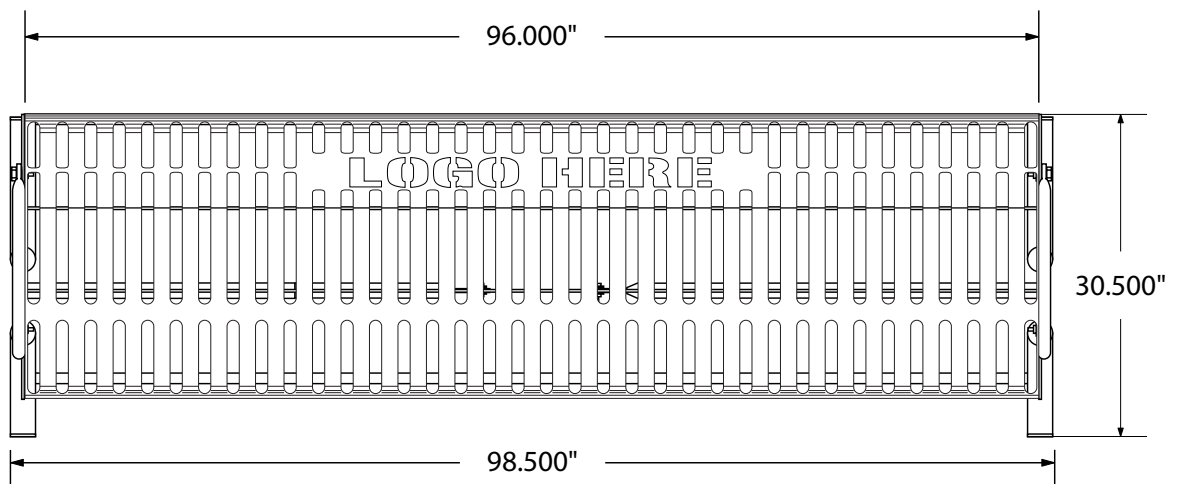
**SPEC SHEET: PVSB8SM**

**8' PERSONALIZED VERTICAL SLATTED BENCH** *SURFACE MOUNT* **Wt. 235 lbs**

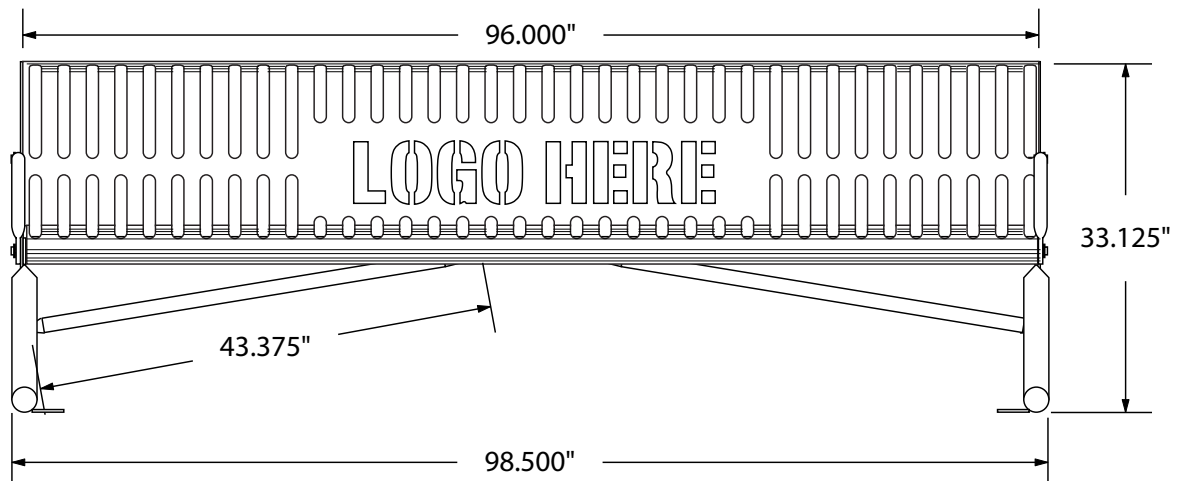


photo depicts PVSB6SM

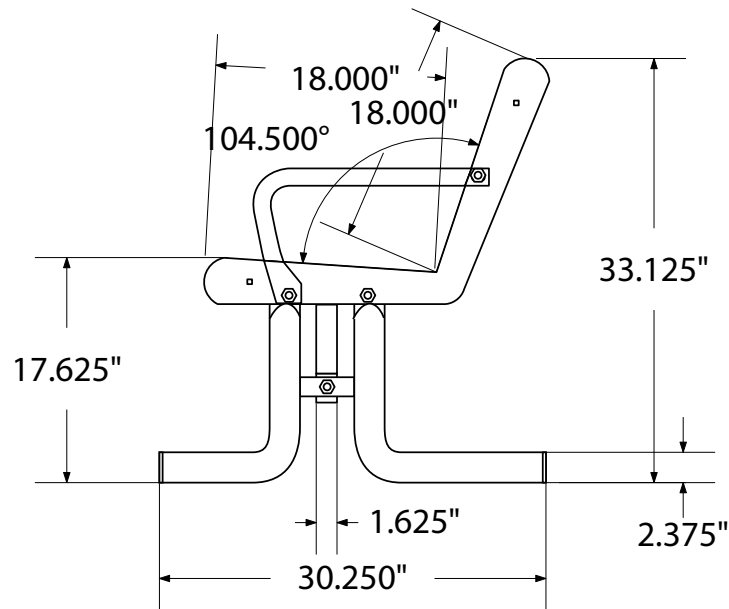
**top view**



**front**



## side view



## product finish



The functional surfaces of our furniture are covered in a copolymer-based thermoplastic powder coating. Thermoplastic is environmentally safe, the coating will never fade, crack, peel, warp, or discolor for the life of the product. Thermoplastic is applied at a thickness of 25-30 mils.



Tubular legs and under structure parts are made from galvanized steel and are finished with black polyester powder coating.

## mounting types

P = Portable : no mount

SM = Surface Mount:  
concrete anchors  
through holes on legs

IG= In-Ground:  
Straight tubular leg em-  
bedded in concrete  
filled hole.

