

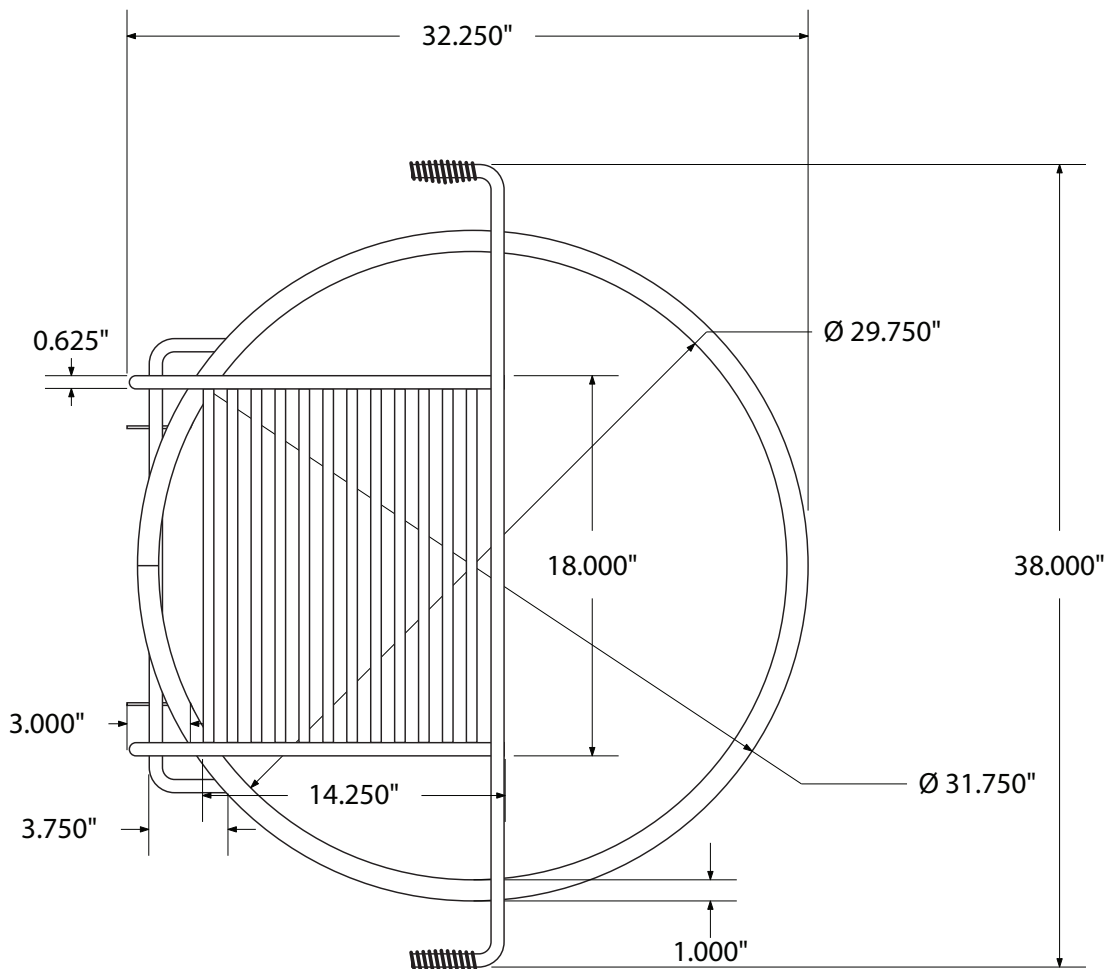
**SPEC SHEET: LCIFG11**

**11 3/8" FLIP GRATE FIRE RING**

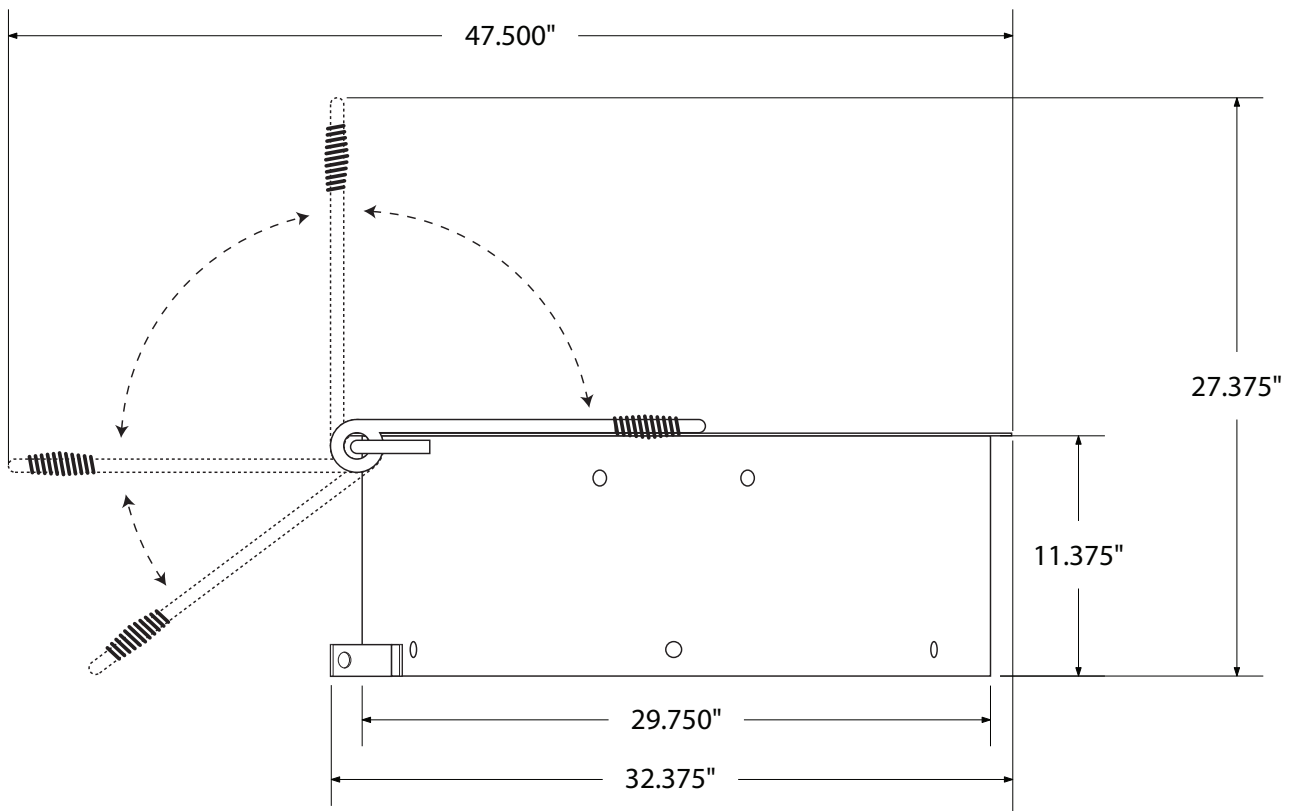
**Wt. 89 lbs**



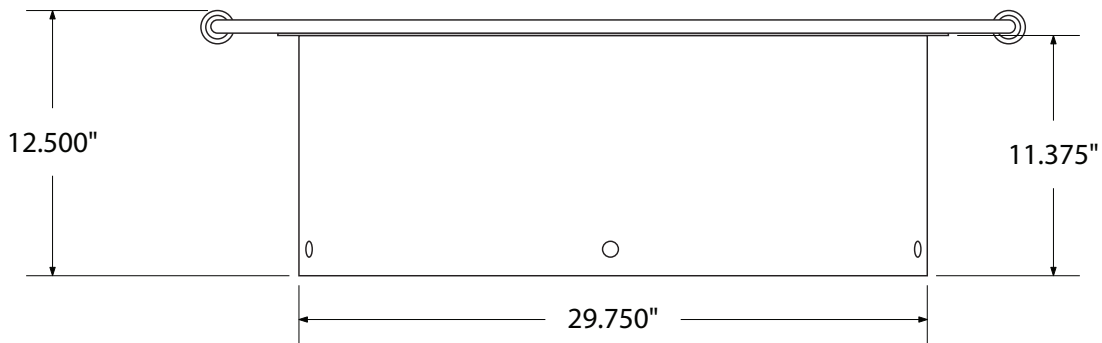
*top view*



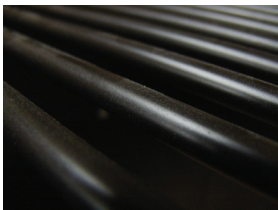
## side view



## front view



## product finish



### Surface Coating:

- Black, high-temperature, non-toxic enamel



### Construction:

- $\frac{3}{16}$ " Thick steel with a 1" flanged lip on the top edge
- Cooking area -  $\frac{1}{2}$ " steel bars
- Grill handles/frame -  $\frac{5}{8}$ " steel bars
- Grips - wire spring to dissipate heat
- 290 Square inches of cooking area
- $\frac{3}{4}$ " Anchor holes for tilt up or permanent mounting