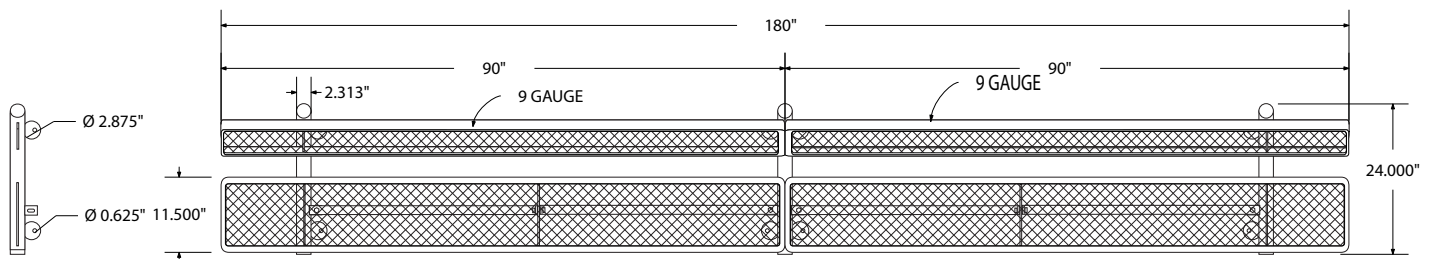


**SPEC SHEET: PB15WBSM**

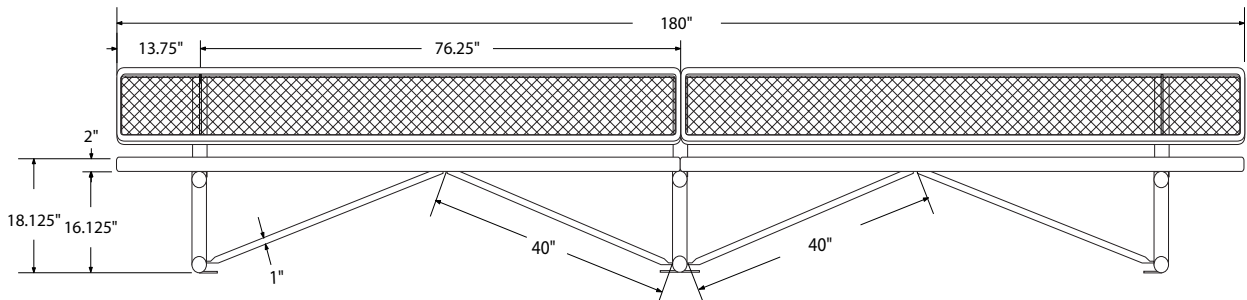
**15' PERSONALIZED STD EXP BENCH W BACK** *SURFACE MOUNT* **Wt. 318 lbs**



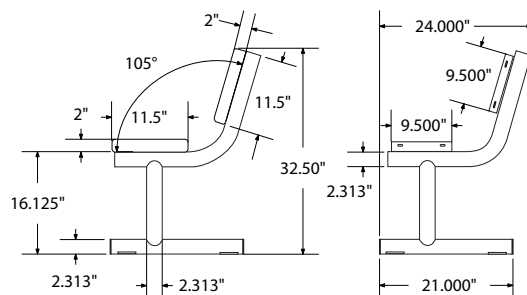
*top view*



*front view*



*side view*



## product finish



The functional surfaces of our furniture are covered in a copolymer-based thermoplastic powder coating. Thermoplastic is environmentally safe, the coating will never fade, crack, peel, warp, or discolor for the life of the product. Thermoplastic is applied at a thickness of 25-30 mils.



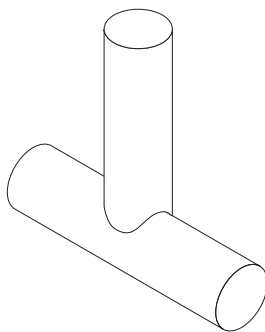
Tubular legs and understructure parts are made from galvanized steel and are finished with black polyester powder coating.

## mounting types

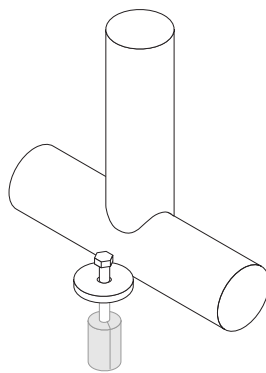
P = Portable : no mount

SM = Surface Mount:  
concrete anchors  
through discs welded  
to legs

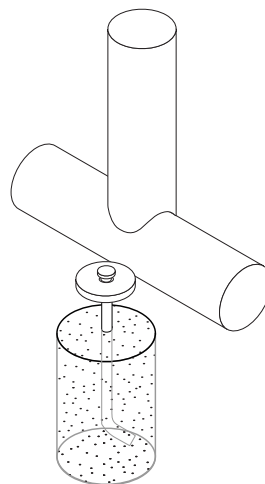
IG= In-Ground:  
J-rods set in concrete  
through discs welded  
to legs



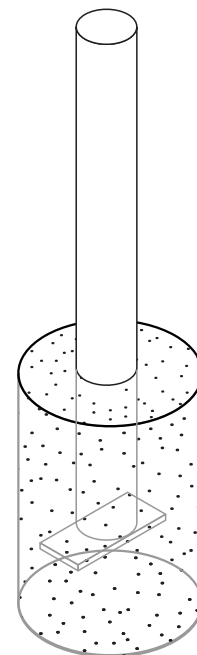
PORTABLE



SURFACE MOUNT



IN-GROUND



IN-GROUND