

## CF-043-P2C19

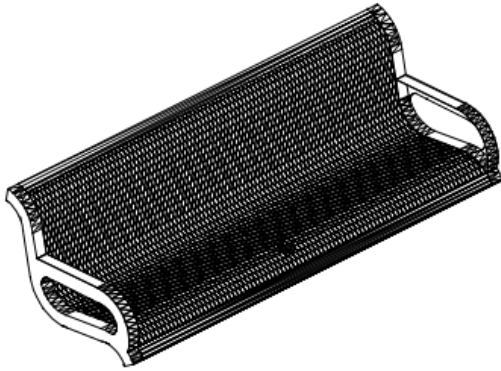
6' WINGLINE STYLE BENCH WITH BACK PORTABLE DESIGN



Please take the time to locate and identify each part. Assemble the units on a smooth flat surface. It is also helpful to lay the tops and seats on cardboard or a drop cloth to prevent scratching of the surface during assembly. All parts have been pre-cut and pre-drilled for ease of assembly. All holes are slotted to allow for easy assembly and for final levelling of tops and seats to frames. Fully assembly all parts without totally tightening nuts and bolts. After all assembled go back and retighten nuts to bolts. **DO NOT OVER TIGHTEN NUTS TO BOLTS.** Over tightened nuts can crack the plastisol coating. All the necessary quantities of parts required are listed in this assembly instruction.

**DO NOT BEGIN ASSEMBLY UNTIL YOU HAVE READ THESE INSTRUCTIONS AND ARE FAMILIAR WITH THE PARTS.**

## PARTS IDENTIFICATION



(A) 6' WINGLINE SEAT



(B) BENCH FRAME



(C) DIAGONAL

## PARTS LIST

ITEM	PART#	DESCRIPTION	QTY.
A	S6WINGLINE	4' WINGLINE SEAT	1
B	FRAME	BENCH FRAME	2
C	DIAGONAL	DIAGONAL	2

ITEM	HARDWARE DESCRIPTION	QTY.
HW1	5/16" X 18 NYL LOCKNUTS	7
HW2	5/16" X 18GA CAP BOLTS	7
HW3	5/16" FLAT WASHERS	14
HW4	BOLT GUARDS	7

ASSEMBLY TOOLS REQUIRED  
2- 1/2" WRENCHES

## HARDWARE IDENTIFICATION



(HW1) 5/16" X 18  
NYL LOCKNUTS



(HW2) 5/16" X 18  
GAUGE CAP BOLTS



(HW3) 5/16"  
FLAT WASHERS



(HW4) BOLT  
GUARDS

## ASSEMBLY PROCEDURES

### STEP 1

MOUNT SEAT TO FRAMES AS SHOWN BELOW BY MEANS OF FOUR 5/16" BOLTS, EIGHT FLAT WASHERS AND FOUR NUTS, THROUGH THE SLOTTED HOLES IN THE SEAT END PLATES AND THE SLOTTED HOLES ON BOTH ENDS OF THE FRAME.

### STEP 2

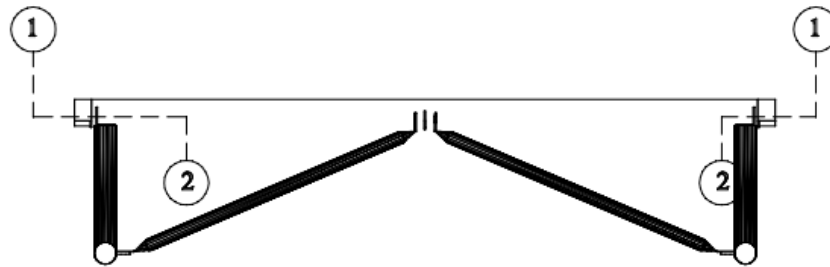
MOUNT THE SET OF DIAGONALS TO THE HOLE ON THE CENTER BRACE OF THE SEAT. MOUNT THE OTHER END OF THE DIAGONALS TO THE TAB ON EACH END OF THE FRAMES. THE DIAGONALS ARE FASTENED TOGETHER BY MEANS OF THREE 5/16" X 1 1/2" HEXBOLTS, SIX 5/16" FLAT WASHERS, AND THREE 5/16" NYLOCK NUTS.

### STEP 3

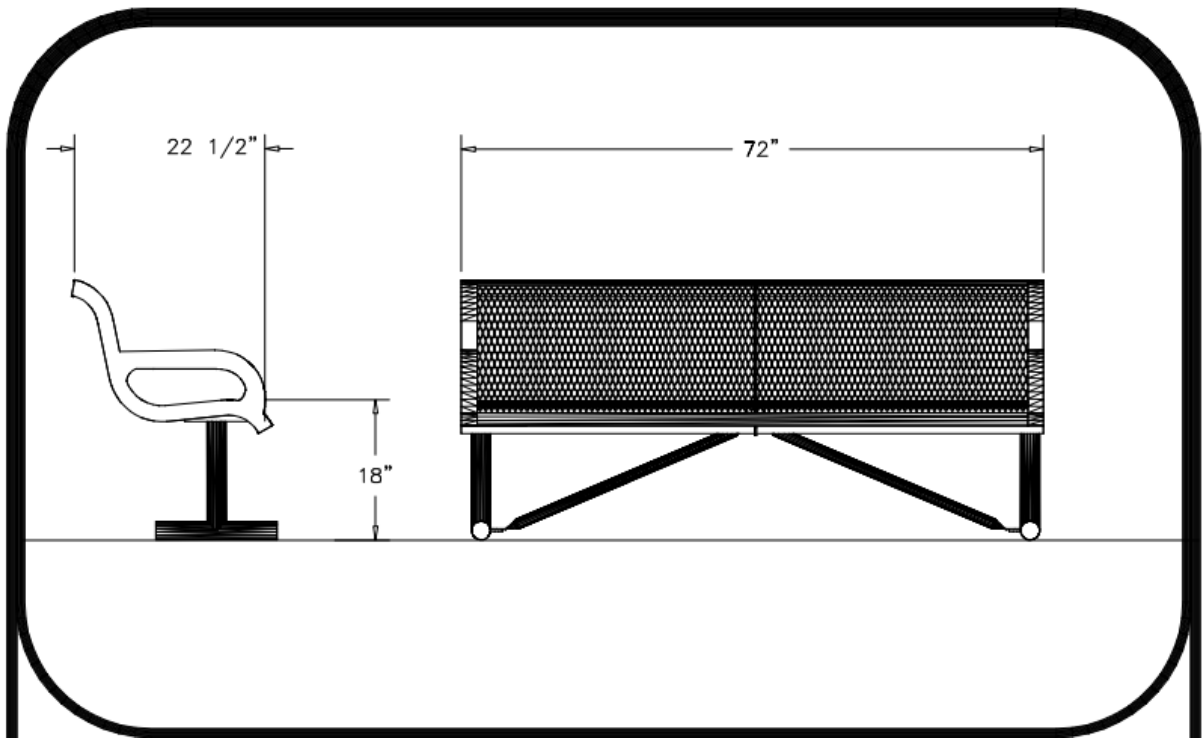
TIGHTEN ALL NUTS ON ALL BOLTS AND PLACE THE BOLT GUARDS ON ALL NUTS. **DO NOT OVER TIGHTEN THE NUTS AS THIS COULD CAUSE THE PLASTISOL COATING TO CRACK.**

### STEP 4

CAREFULLY SET BENCH UPRIGHT AND MOUNT THE SURFACE MOUNT FRAMES TO THE SELECTED SURFACE. **SURFACE MOUNTING HARDWARE NOT INCLUDED.**



1	CAP. BOLT & WASHER
2	WASHER & LOCK NUT



### SPECIFICATIONS

6' POLY VINYL FORMED BENCH WITH BACK.  
FRAME IS PORTABLE DESIGN.

COATED WITH A 1/8" TO 1/4" THICK PLASTISOL ULTRAVIOLET STABILIZED VINYL COATING  
FUSED AND BAKED TO A 90% GLOSS.

SEAT HEIGHT IS 18" APPROXIMATELY, BACK HEIGHT IS 31" APPROXIMATELY.  
TOTAL OVERALL DIMENSIONS ARE 72" X 22 1/2" APPROXIMATELY.

SEATS ARE MADE FROM 3/4" #9 EXPANDED METAL INSIDE OF A 2" X 2" X 1/8" ANGLE  
ALL CENTER BRACES ARE MADE OF 11 GAUGE FLAT STEEL.

FRAME IS MADE OF 2 7/8" TUBING.  
POWDER COATED WITH POLYESTER ELECTROSTATIC PAINT.

ALL HARDWARE IS NON-CORROSIVE.  
WEIGHT FOR THE B6WBWINGLINEP IS 121 LBS.

### MAINTENANCE

To maintain luster it is recommended to wash, rinse, and dry the units after prolonged use.  
Check for loose bolts and nuts and tighten as needed. Contact the factory for genuine  
Webcoat part replacements if needed.